

Carbon Fibre Foot Plates - FLAT

Carbon Fibre Foot Plates

- High strength carbon fibre composite foot plates used to limit forefoot motion
- Suitable for conditions such as hallux rigidus, turf toe, plantar plate pathologies, 1st MPJ arthritis or capsulitis
- Thermoplastic composite laminate made using a semi-crystalline polyethylene terephthalate (PET) matrix resin
- Highly resilient - will not lose its shape or material properties after continued use in high loading applications
- Low profile design for easy shoe fit
- Minor grinding can be utilised to take back device width
- Sold individually - NOT IN PAIRS



Carbon Fibre Foot Plates - FLAT

* fits UP TO shoe size shown * approx. foot plate length

SEMI-FLEX (Thickness: 1.44 mm – 1.63 mm)

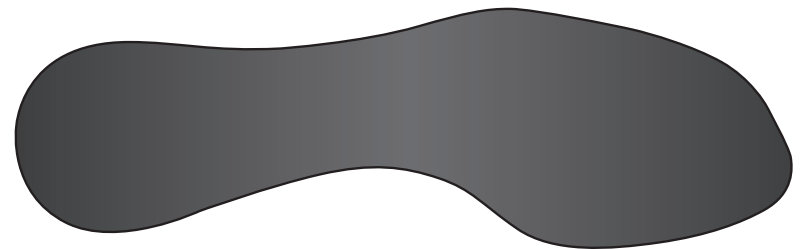
CFF18-SF	👤 ---	US*: 👤 ---	👤 3	18cm*
CFF21-SF	👤 ---	US*: 👤 ---	👤 4	20.6cm*

SEMI-RIGID (Thickness: 1.69mm – 1.91mm)

CFF21-SR	👤 ---	US*: 👤 ---	👤 4	20.6cm*
CFF24-SR	👤 *38/*37½	US*: 👤 6	👤 7	23.8cm*
CFF26-SR	👤 *41/*40	US*: 👤 8	👤 9	26cm*
CFF29-SR	👤 *44½-45	US*: 👤 11	👤 12	29cm*

RIGID (Thickness: 1.93mm – 2.19mm)

CFF21-R	👤 ---	US*: 👤 ---	👤 4	20.6cm*
CFF24-R	👤 *38/*37½	US*: 👤 6	👤 7	23.8cm*
CFF26-R	👤 *41/*40	US*: 👤 8	👤 9	26cm*
CFF29-R	👤 *44½-45	US*: 👤 11	👤 12	29cm*



Log-in to www.briggatemedical.com for pricing

briggatemedicalcompany

Supporting Podiatrists with integrity and trust since 1987

(03) 8586 7800 (Melb. Metro)

1800 33 4142 (Free Call)

briggate@briggate.com.au

www.briggatemedical.com