

# Mepilex® Border Lite

## The self-adherent thin bordered foam dressing

### Polyurethane backing film

- Shower-proof<sup>1,2,3</sup>
  - Bacteria and viral barrier<sup>4,5,6,†</sup>
- † Microbes larger than 25 nm

### Two-layer pad

- Hydrophilic polyurethane foam to quickly absorb exudate
- Non-woven spreading layer to optimise the absorption capacity and prevent leakage.



### Safetac® wound contact layer

- Less pain during dressing changes<sup>7</sup>
- Does not stick to the wound, for less disturbance<sup>8</sup>
- Seals wound margins to avoid maceration<sup>9</sup>



## How Mepilex Border Lite works

Mepilex Border Lite is a thin and conformable version of Mepilex Border; ideal for body contours and hard-to-dress areas and is available in smaller sizes. It is a self-adherent dressing that absorbs exudate, maintains a moist wound environment and minimises the risk of peri-wound maceration. The Safetac technology layer allows the dressing to be changed without causing additional pain to the patient or trauma to the wound and surrounding skin<sup>7,8,10</sup>.

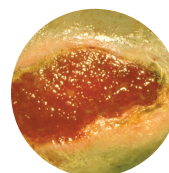
## Benefits of Mepilex Border Lite

- Minimises trauma to the wound and pain to the patient during dressing changes<sup>7,8,10</sup>
- Excellent fit to the wound and body contours
- A thin and conformable all-in-one dressing
- Barrier to outside moisture, viruses and bacteria
- Minimises the risk of maceration
- Does not adhere to moist wound
- Adheres gently and securely to dry, intact surrounding skin

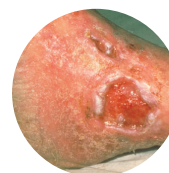
## Areas of use

You can use Mepilex Border Lite to treat a wide range of exuding wounds such as:

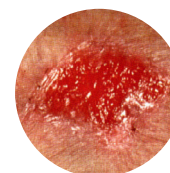
- Non to low exuding wounds
- Leg and foot ulcers
- Pressure injuries
- Traumatic wounds (e.g. abrasions, finger injuries, blisters, and skin tears)
- Protection of compromised and/or fragile skin



Granulating wound



Leg ulcer



Primary wound protection

## Mepilex Border Lite ordering information<sup>‡</sup>

Product Code	Size	Pcs/box
281000	4 x 5 cm	10