

Mepitel®

Soft silicone wound contact layer - double-sided



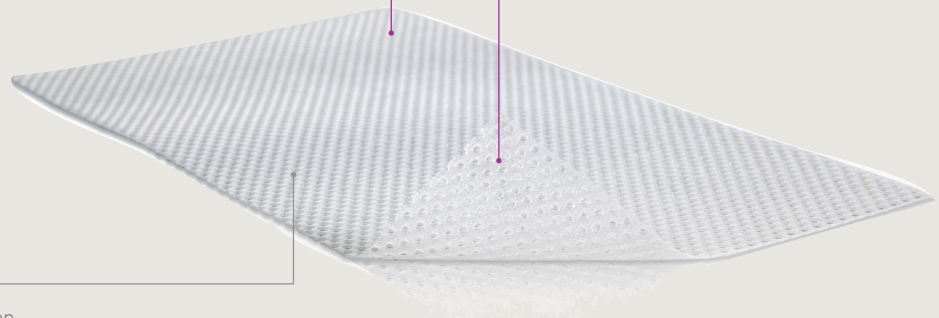
Safetac
TECHNOLOGY

Safetac® technology layer

- Safetac technology on both sides
- Less pain during dressing changes¹
- Does not stick to the wound, for less disturbance²
- Seals wound margins to avoid maceration³

Open mesh structure

- Allows transfer of exudate and application of topical treatment
- Transparent



How Mepitel works

Mepitel may be left in place for up to 14 days⁴⁻⁸, depending on the condition of the wound, which reduces the necessity for frequent primary dressing changes. The porous structure of Mepitel allows exudate to pass into an outer absorbent dressing. The Safetac technology layer prevents the outer dressing from sticking to the wound and ensures atraumatic dressing changes. The Safetac technology layer also seals around the wound edges, preventing the exudate from leaking onto the surrounding skin, thus minimising the risk of maceration.

Benefits of Mepitel

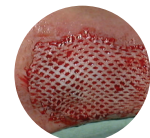
- Minimises trauma and pain during dressing changes^{1,2}
- Prevents damage to newly formed delicate tissue upon removal
- May remain in place for up to 14 days⁴⁻⁸ for cost-effective^{9,10} undisturbed wound healing
- Enables less frequent dressing changes
- Minimises the risk of maceration³
- Does not adhere to moist wound beds, but to dry tissue only
- Transparent for easy wound inspection during application and during wear
- Conforms well to body contours, promoting patient comfort during wear

Precautions: 1. The wound should be inspected for signs of infection according to clinical practice. Consult a healthcare professional for the appropriate medical treatment. 2. Mepitel used on burns treated with meshed grafts: avoid placing unnecessary pressure upon the dressing. 3. Mepitel used after facial resurfacing: avoid placing pressure upon the dressing, lift and reposition the dressing at least every second day. 4. When used on bleeding wounds or wounds with high viscosity exudate, Mepitel should be covered with a moist absorbent dressing pad. 5. When Mepitel is used for the fixation of skin grafts, the dressing should not be changed before the fifth day post application.

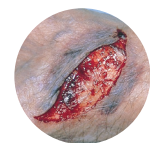
Areas of use

Mepitel is a wound contact layer designed for the management of a wide range of exuding wounds such as:

- Skin tears
- Skin abrasions
- Surgical incisions
- Partial thickness burns
- Blistering
- Lacerations
- Venous and arterial leg ulcers
- Diabetic foot ulcers
- Partial and full thickness grafts



Skin grafts



Skin tears

Mepitel Ordering information[‡]

Product Code	Size	Pcs/box
290510	5 x 7.5 cm	10



Mölnlycke®