

BladeFLASK

Single-Hand Blade Removal System



- TICKS ALL
- THE RIGHT
- BOXES



Mounting Bracket sold separately

AS/NZS 3825:1998 Procedures and Devices for the Removal and Disposal of Scalpel Blades from Scalpel Handles specifies that removal of the blade must occur using a **single-handed** technique. This requires a device **compliant with AS/NZS 3825** to be used in accordance with manufacturer's instructions. In general terms, this requires the approved blade-removing device to be **securely mounted to a surface** so that the container does not need to be held by the other hand during blade removal. ✓

pg 47 - Infection Prevention and Control Guidelines for Podiatrists

After they are used, single-use syringes and needles, scalpel blades and other sharp items such as capillary tubes, glass and dental wires, should be placed in an appropriate container. **These containers should be clearly labelled, puncture and leak proof, and conform to Standards AS 4031: 1992.** ✓

pg 53 - Australian Guidelines for the Prevention and Control of Infection in Healthcare

The forgotten sharps injury

Scalpel injuries are 200 times more likely to occur than needlestick injuries. They are particularly common in surgical settings. Regrettably, many users and clinical administrators have underestimated the likelihood of these injuries.

Scalpel cuts can happen to anyone, including you, no matter how experienced you are in handling scalpels. These cuts can result in infections, blood-borne diseases and psychological distress. Other serious injuries could require microsurgery to repair digital arteries, nerves and tendons.

Many such scalpel injuries can be prevented using the Qlicksmart BladeFLASK, the world's pioneering single-handed blade remover.

briggatemedicalcompany

Supporting Podiatrists with integrity and trust since 1987



The Clicksmart BladeFLASKs have safely removed over 70 million contaminated scalpel blades, and prevented up to 150,000 injuries around the world.



BladeFLASK is simple to use with a quick "push, click, and pull" action to remove and contain used scalpel blades.



This easy-to-use solution provides a lower cost alternative to safety scalpels.



Used together with a hands-free passing technique, the BladeFLASK can prevent up to 5 times more injuries than a safety scalpel.



BladeFLASK allows all scalpel blade users to maintain their preferences for the standard metal handles.



BladeFLASK has won multiple awards, which demonstrate its practicality and effectiveness in reducing scalpel injuries.

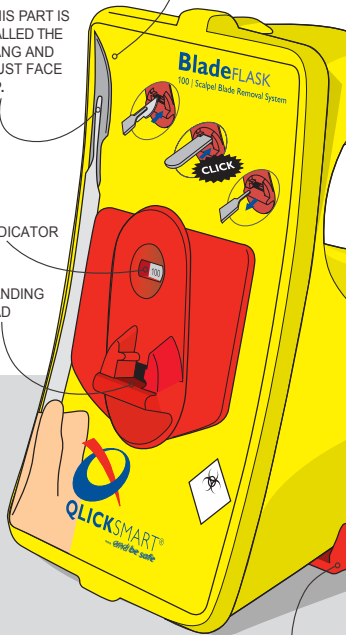
PARTS OF YOUR BladeFLASK:

SHARP EDGE FACES TO THE RIGHT

THIS PART IS CALLED THE TANG AND MUST FACE UP.

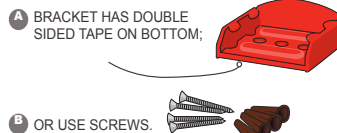
INDICATOR

LANDING PAD



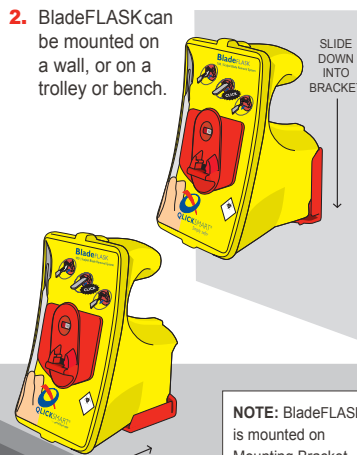
MOUNT TO WALL OR TROLLEY:

1. If you haven't mounted your BladeFLASK before, prepare mounting bracket*.



* See fitting template and instructions inside the bracket packaging.

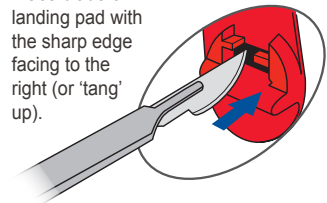
2. BladeFLASK can be mounted on a wall, or on a trolley or bench.



NOTE: BladeFLASK is mounted on Mounting Bracket during use.

REMOVE BLADE SINGLE HANDED ACTION:

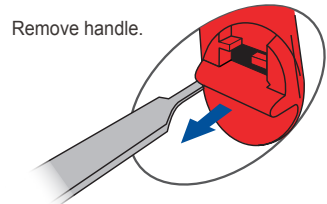
1. Place blade on landing pad with the sharp edge facing to the right (or 'tang' up).



2. Push scalpel handle into BladeFLASK until you hear a click.



3. Remove handle.



NOTE:

- * When performing step 3, confirm that the blade is removed and contained in BladeFLASK.
- * BladeFLASK needs to be used with Clicksmart Mounting Bracket (to be purchased separately).
- * BladeFLASK is disposed of as medical waste after 100 blades have been removed.

BFB160505A3

briggatemedicalcompany

Supporting Podiatrists with integrity and trust since 1987

(03) 8586 7800 (Melb. Metro)

1800 33 4142 (Free Call)

briggate@briggate.com.au

www.briggatemedical.com