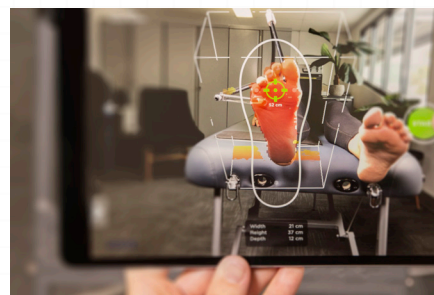


# SCANMATE

Perfectly positions the foot in subtalar joint neutral for an accurate and consistent non-weight bearing scan



Steel plate assists in subject stability during scanning

Manufactured in:  
**Australia**



Easy dis-assembly with Allen Key housed in steel arm (to facilitate compact transportation between clinics)

Transparent bar assists in locking off the foot without imposing on scan quality

3 Flexible steel arms allow for versatile positioning to suit area being scanned

Ball end offers plantarflexing force to the first ray



## ScanMate Foot Positioning Device

- Designed to reduce patient movement while using digital scanning devices
- Suitable for scanning when patient is in prone or supine positions
- Saves time and offers clearer scanning results
- Solid, light-weight construction

SCANMATE Log-in to [www.briggatemedical.com](http://www.briggatemedical.com) for pricing

# briggatemedicalcompany

Supporting Podiatrists with integrity and trust since 1987

(03) 8586 7800 (Melb. Metro)

1800 33 4142 (Free Call)

[briggate@briggate.com.au](mailto:briggate@briggate.com.au)

[www.briggatemedical.com](http://www.briggatemedical.com)